



GOMANY DISPLAY

It is a professional provider of smart display equipment solutions serving subway, high-speed rail, bus and new retail emerging industries.

2023.10



CONTENT

ABOUT GOMANY

Manufacturing capacity

Product application

Partner

Honorary certification





01

PART 01
-ABOUT GOMANY



Company Profile



Shenzhen Gomany Electronics Co., Ltd. was established in 2007. Its subsidiary Gomany Commercial Display Technology is a high-tech enterprise specializing in the research and development, production and sales of industrial-grade special-shaped display equipment products. It has a modern standard clean workshop of 5,000 square meters and a 300-square-meter dust-free workshop, equipped with 2 high-speed strip screen module production lines, 2 strip screen complete machine production lines, and 3 professional precision cutting equipment (8 inches-120 inches), including A number of advanced automated production and professional testing equipment such as glass cutting machines, sealing machines, and polarizing cutting machines adopt ERP material management system and MES production management system, with a designed monthly production capacity of more than 6,000 units.

GOMANY is a leading technology company with over 1,000 customers in 80 countries, having deployed over 400,000 screens to a global customer base in 8 years of business. We provide high-quality and innovative display solutions for the commercial display, rail transit, industrial and digital outdoor market sectors. You'll find our products used in a wide range of key areas including: supermarkets, railways, autonomous vehicles, green energy, artificial intelligence, factory automation, medical, human machine interface, digital signage, gaming and multimedia.



| Company culture

- **Corporate mission:**

High taste, Aesthetics, FUWANJIA

- **Enterprise quality policy:**

People-oriented, technological innovation;

Quality first, continuous improvement;

Integrity and truth-seeking, customer satisfaction;

- **Corporate values:**

Innovation → Development; Performance → ensuring growth; Unity → gathering strength; Dedication → setting an example; Integrity → winning the world;

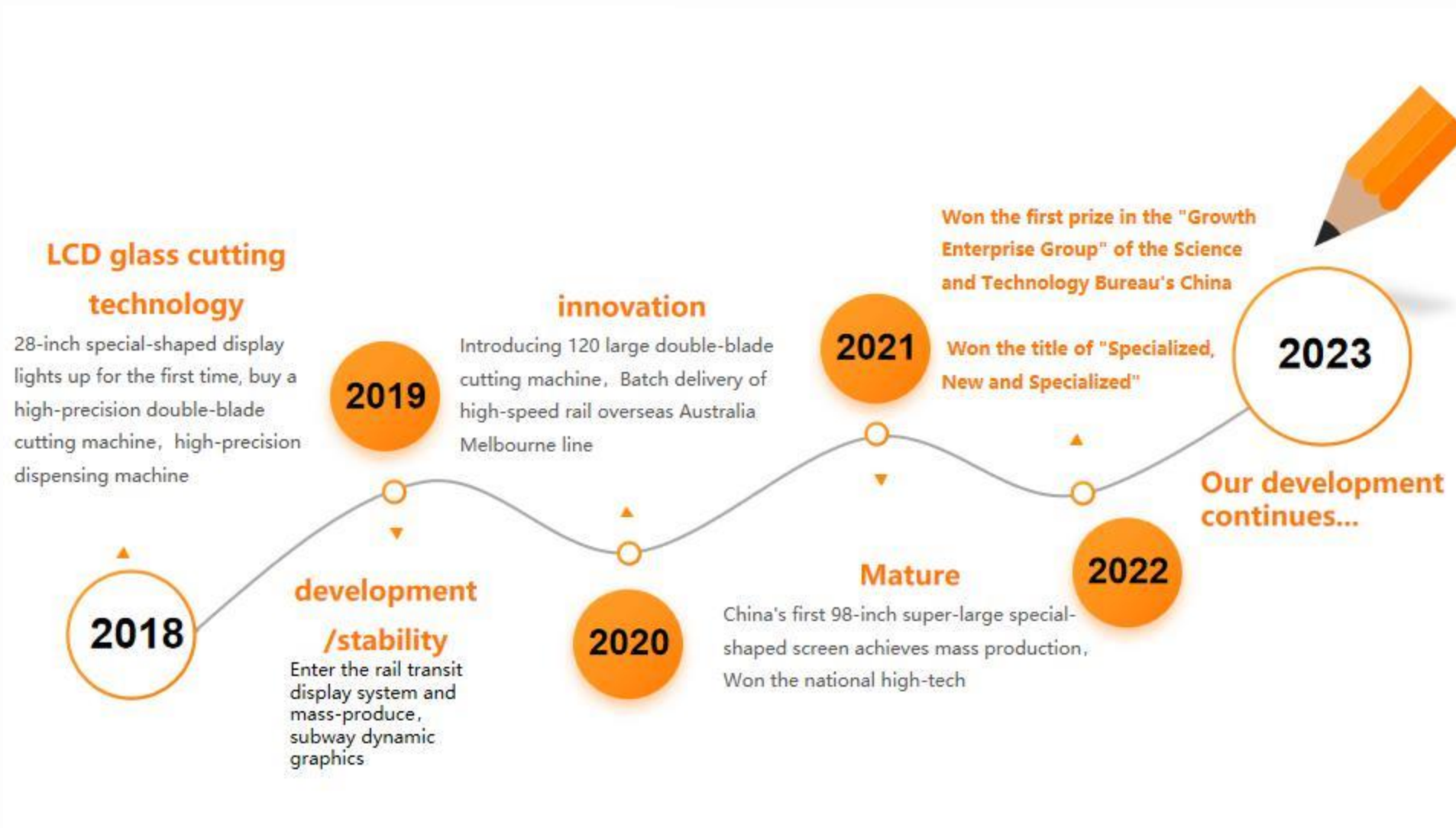


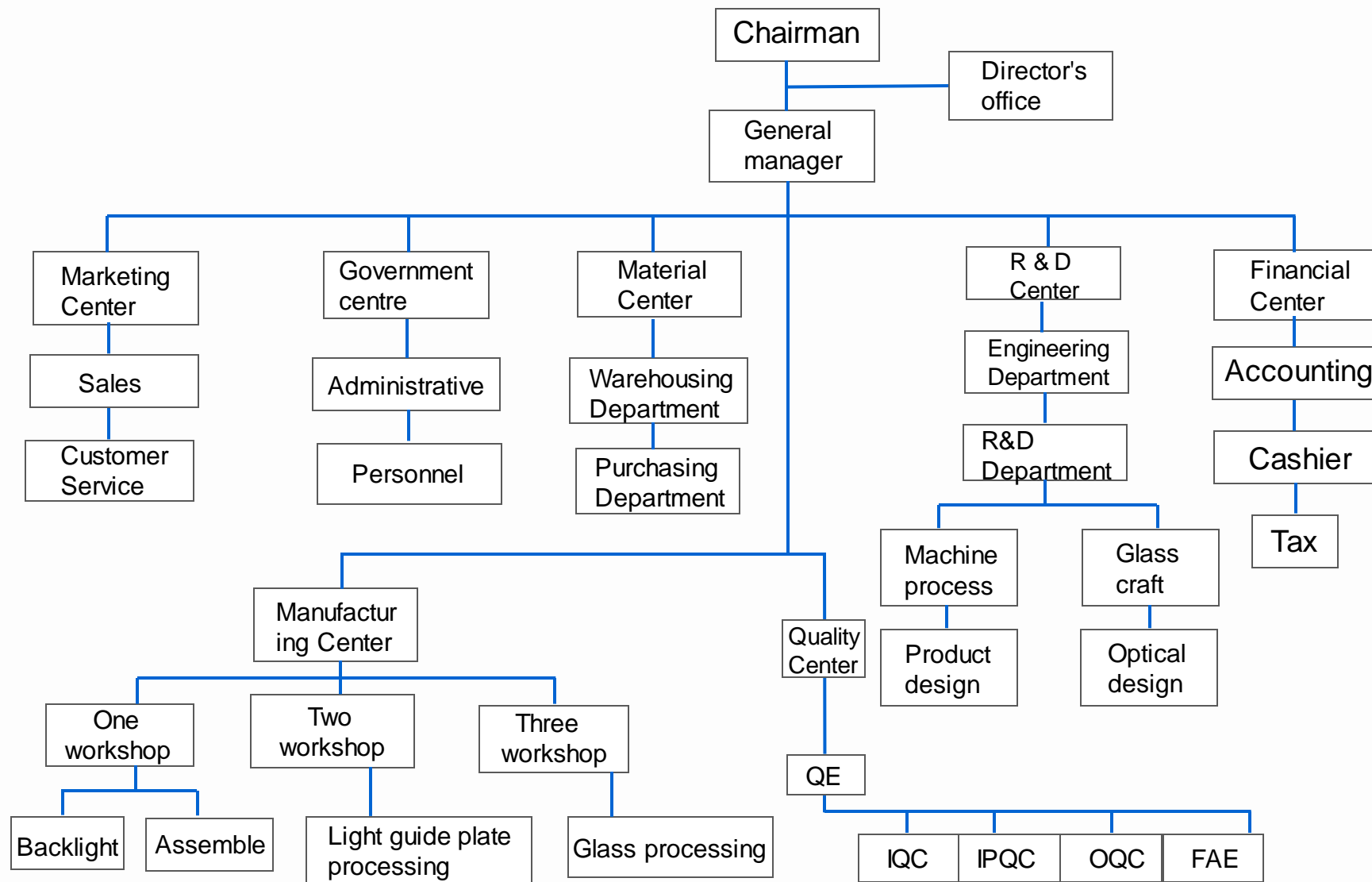
Company history





Company history





Ding Lindong
Chairman

- Graduated from Xi'an University of Technology.
- Many years of management experience in well-known state-owned enterprises.
- Founded GOMANY in 2007.
- Senior management training student at Peking University HSBC Business School.
- Have extensive experience in business management and marketing.

02

PART 02

-Manufacturing capacity



Manufacturing capacity

- Our Factory



Exhibition hall



Technical team



Office area



Manufacturing capacity

- Our Factory



Glass cutting workshop



Production workshop



Dust-free workshop



Manufacturing capacity

- Our Factory



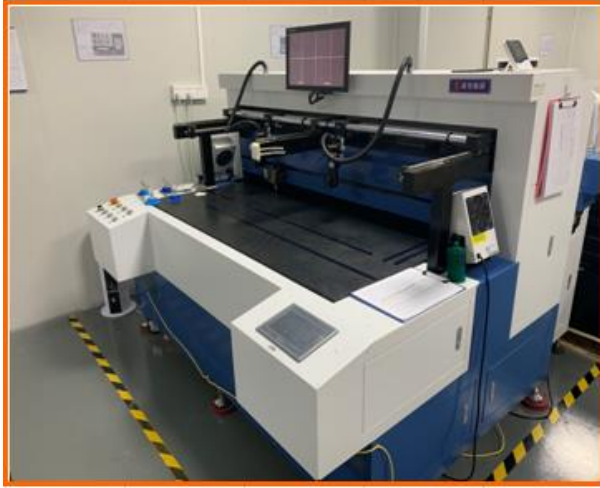
Aging room



Glass inspection dark room



QC inspection



Glass cutting machine

Factory	quantity	Production capacity/day/unit
Shenzhen		300PCS
TOTAL:	3 units	



Automatic dispensing machine

Factory	quantity	Production capacity/day/unit
Shenzhen		300PCS
TOTAL:	3 units	



Polarizer cutting machine

Factory	quantity	Production capacity/day/unit
Shenzhen		300PCS
TOTAL:	3 units	



Ancillary Equipment

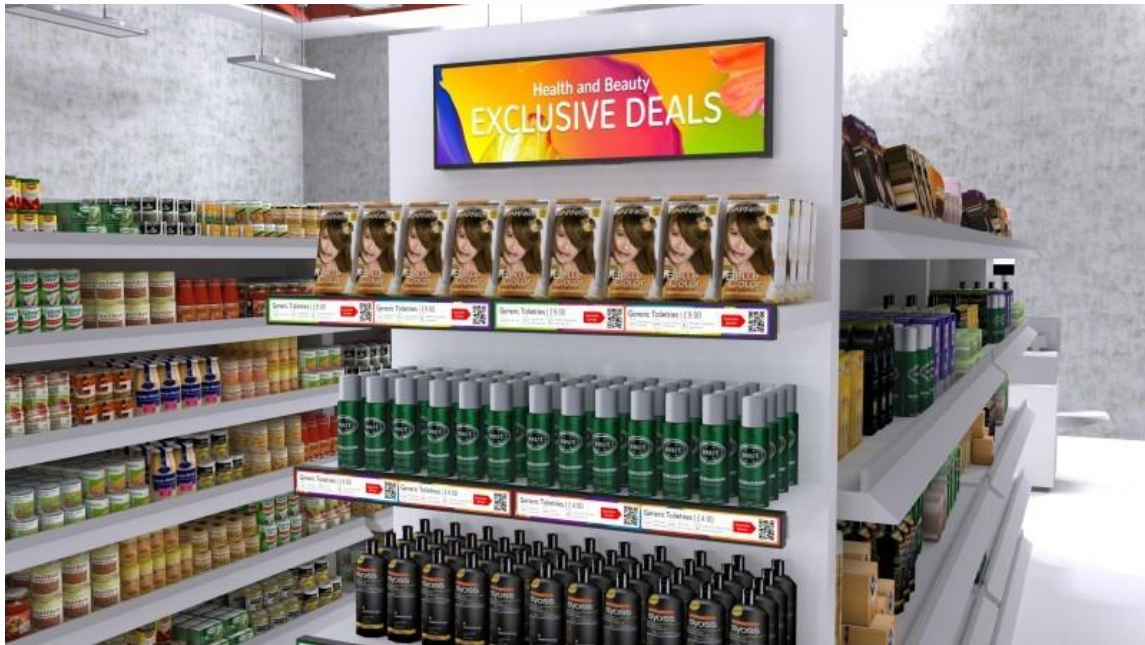


03

PART 03 -Product application



product / Shelf edge LCD display



Model: G231AY158-S01

Size: 23.1 Inch stretched bar LCD for shelf edge display

Product Size: 584.6mm (H) x 48.2mm (V)

resolution: 1920*158

brightness: 400 Nits

Advantages and features:

- Remote comprehensive management saves time and is more convenient.
- Flexible split screen to display different product content and prices
- Shelf screens are very suitable for commercial spaces such as shopping malls, shopping malls, and specialty stores, and can better stimulate customers' desire to buy.



product / Square lcd display



Model: G330AYJ80-S01

SIZE: 33 Inch square lcd screen

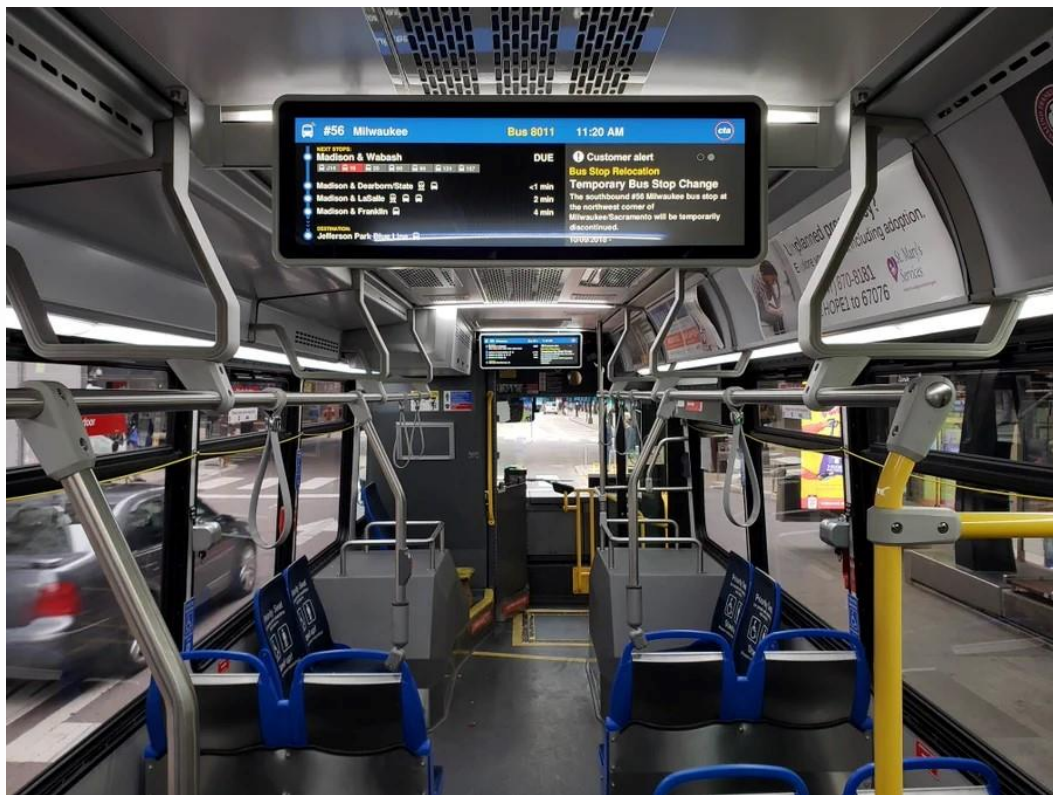
Product Size: 592.2mm (H) x 592.2mm (V)

resolution: 1880*1880

brightness: 500 Nits

Advantages and features:

- Intelligent digital photo frame, ultra-high picture quality, can present perfect visual effects
- Square LCD screens are often used in new commercial retail, chain restaurants, cosmetics stores, high-end luxury stores, boutiques, exhibitions and other fields. Square LCD screens are gradually replacing traditional billboards, light boxes and other display products due to their special size and ability to play a variety of materials (such as videos, pictures, audio, text, etc.)



Model: G286AY540-S01

SIZE:28.6Inch Stretched Bar LCD for traffic route display

Product Size:698.4mm (H) x196.425mm (V)

resolution: 1920*540

brightness: 500 Nits

Advantages and features:

- Smart digital line displays make smart transportation smarter by eliminating the need for paper signage and delayed delivery of updates
- Digital metro line maps show the current location and next station in a dynamic way, Arrival and door opening tips show on the screen along with the voice announcement



Model: G700AW1440-D01

SIZE:70Inch floor standing full screen digital signage

Product Size:1649.66mm (H) x618.624mm (V)

resolution: 3840*1440

brightness: 500 Nits

Advantages and features:

- Full screen, HD quality,customers can enjoy crystal-clear visuals that are more vivid, brighter and with greater depth of detail
- Dynamic video ads can effectively engage customers and capture their attention in a way that traditional static displays cannot.



Model: G290AQ540-S01

SIZE: 29 Inch stretched bar curved LCD monitor

Product Size: 698.4mm (H) x 196.425mm (V)

resolution: 1920*540

brightness: 500 Nits

Advantages and features:

- Curved monitors are designed to extend the image in an arc around your field of view so that you see the edges of the screen with your peripheral vision, rather than seeing it as a flat image. Therefore, curved monitors are mainly good for increasing immersion surrounds you, not just in front of you
- Curved ultrawide monitors are great for multitasking or working on projects that require multiple tabs to be open at the same time. Some studies even suggest that curved monitors can also reduce eye fatigue. Curved screens also ensure that every pixel is tilted towards you, providing better color consistency than similarly sized flat monitors.

**Model: G585AYA80-D01**

SIZE: 58 inch outdoor bar display

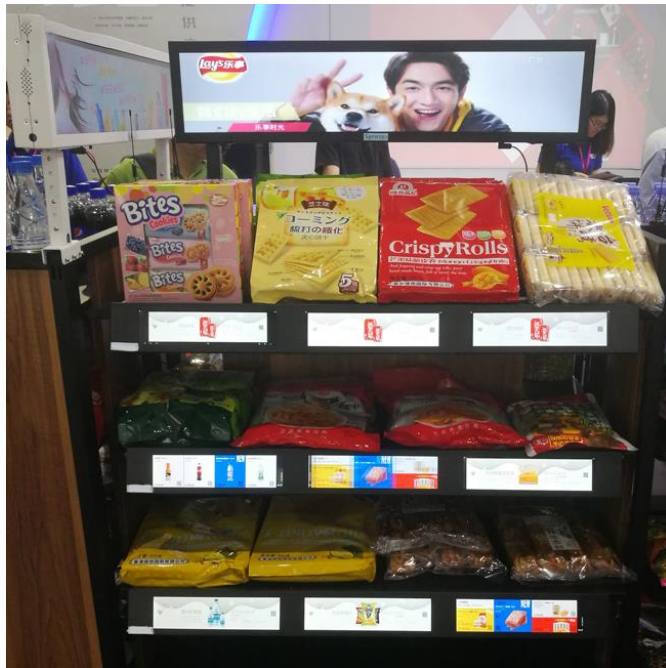
Product Size: 1428.48mm (H) x 440mm (V)

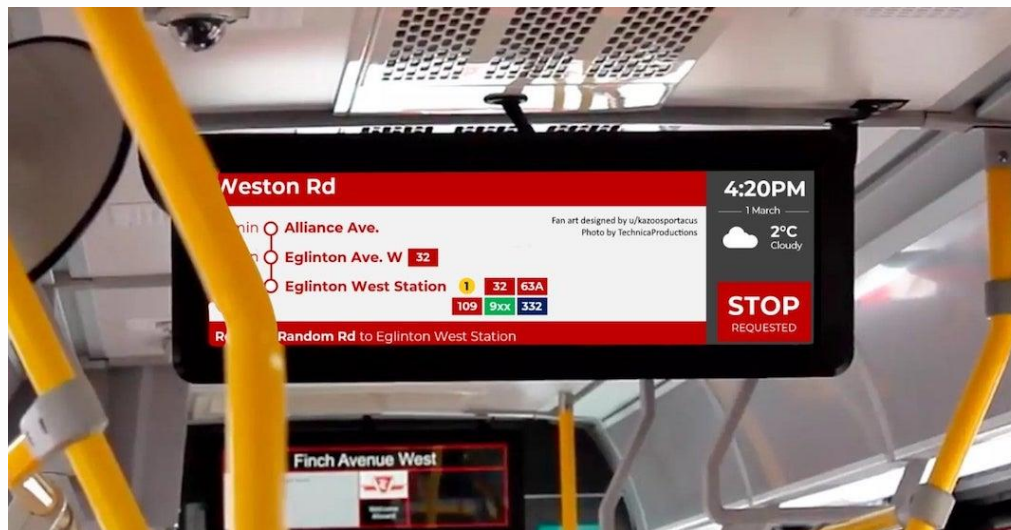
resolution: 3840*1080

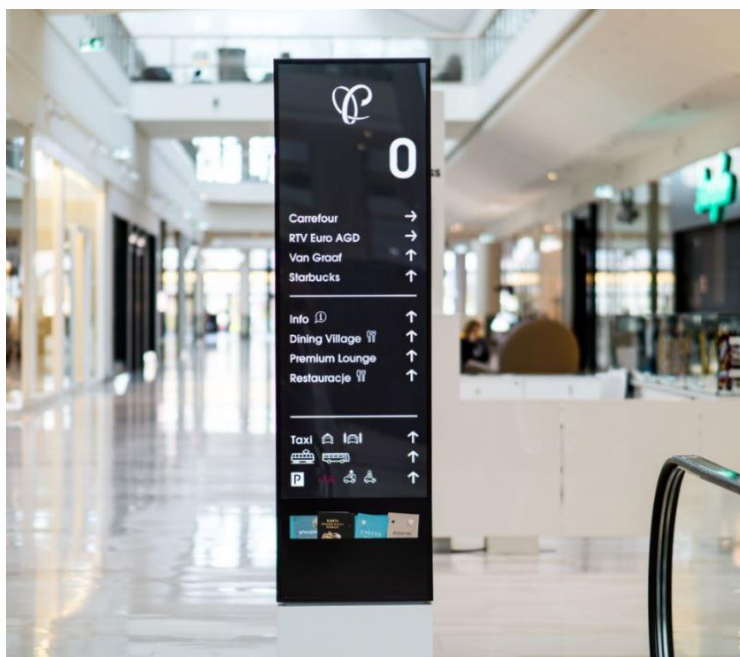
brightness: 1500 Nits

Advantages and features:

- Outdoor highlight display, readable under sunlight, waterproof, dustproof and explosion-proof design
- In an outdoor environment, passing tourists are easily attracted and eager to visit and get information, schedules, visitor information, etc. from the products. In a retail environment, 24/7 advertising enhances your business, is always available and maintains your value







04

PART 04 -Partner



Partner icon



05

PART 05

-Honorary certification



Quality certification



GB/T19001-2016/ ISO 9001:2015



GB/T24001-2016/ISO1400:2015



Quality certification



Specialized and New Small and Medium Enterprises



High-tech enterprises

Multiple patent certifications:

NO.	Date	Applicant	Patent No	Patent name	Type
1	2019/4/2	ShenZhen Gomany Display Co.,Ltd.	ZL 2019 2 0436457.5	A UV light-curing glue coating jig	Utility model
2	2019/4/2	ShenZhen Gomany Display Co.,Ltd.	ZL 2019 2 0436464.5	An ultra-high brightness commercial display module	Utility model
3	2019/4/2	ShenZhen Gomany Display Co.,Ltd.	ZL 2019 2 0436462.6	An ultra-thin and highly sensitive display device with touch	Utility model
4	2019/4/2	ShenZhen Gomany Display Co.,Ltd.	ZL 2019 2 0436883.9	A fixing mechanism to prevent displacement of the light guide plate	Utility model
5	2019/4/2	ShenZhen Gomany Display Co.,Ltd.	ZL 2019 2 0436882.4	A sealing jig to prevent leakage during liquid crystal cutting	Utility model
6	2020/2/1	ShenZhen Gomany Display Co.,Ltd.	ZL 2020 2 0148842.2	A bar display for advertising	Utility model
7	2020/5/9	ShenZhen Gomany Display Co.,Ltd.	202010381768.3	Glass cutting machine with protective device	Patent
8	2020/5/9	ShenZhen Gomany Display Co.,Ltd.	ZL 2020 2 0744640.4	Glass cutting machine with protective device	Utility model
9	2020/5/9	ShenZhen Gomany Display Co.,Ltd.	20201038258.1.5	A kind of polarizer cutting and processing technology	Patent
10	2020/5/8	ShenZhen Gomany Display Co.,Ltd.	ZL 2020 2 0744847.1	A cutting device for advertising screen production	Utility model
11	2020/5/8	ShenZhen Gomany Display Co.,Ltd.	ZL 2020 2 0740773.4	An embedded advertising screen in a passenger car	Utility model
12	2020/5/8	ShenZhen Gomany Display Co.,Ltd.	ZL 2020 2 0741158.5	A polarizing film cutting machine	Utility model
13	2020/5/8	ShenZhen Gomany Display Co.,Ltd.	ZL 2020 2 0742486.7	A glass cutting machine for vehicle bar screen processing	Utility model
14	2020/5/8	ShenZhen Gomany Display Co.,Ltd.	ZL 2020 2 0742331.3	A laser dotting machine for making light guide plates	Utility model
15	2020/5/8	ShenZhen Gomany Display Co.,Ltd.	ZL 2020 2 0744786.9	A kind of double strip screen for advertising machine	Utility model
16	2021/4/6	ShenZhen Gomany Display Co.,Ltd.	ZL 2021 2 0686997.6	A kind of ceiling-mounted double-sided display with large viewing area	Utility model
17	2021/4/6	ShenZhen Gomany Display Co.,Ltd.	ZL 2021 2 0687256.X	A double-sided display that displays information in multiple directions	Utility model
18	2021/4/6	ShenZhen Gomany Display Co.,Ltd.	ZL 2021 2 0688952.2	A conveniently adjustable rail transit display	Utility model
19	2021/4/6	ShenZhen Gomany Display Co.,Ltd.	ZL 2021 2 0689121.7	An explosion-proof explosion-proof double-sided display	Utility model
20	2021/4/6	ShenZhen Gomany Display Co.,Ltd.	ZL 2021 2 0689193.1	A protective device for rail transit displays	Utility model
22	2021/11/1	ShenZhen Gomany Display Co.,Ltd.	2L 2021 112852197	A liquid crystal display panel processing device and method	Patent



Contact information

Shenzhen Gomany Display Co., Ltd.

Address:Bldg. 1, Jiada Green Material Industrial Park, Chaoyang Rd., Baoan Dist. Shenzhen, China.

Tel:+86 0755 2645 6919

Tel&Whatsapp: +8618613071393

www.gomanylcd.com

www.gmfdisplay.com