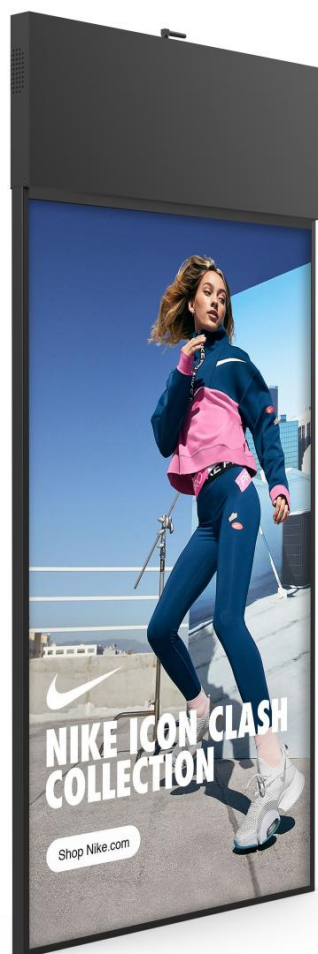
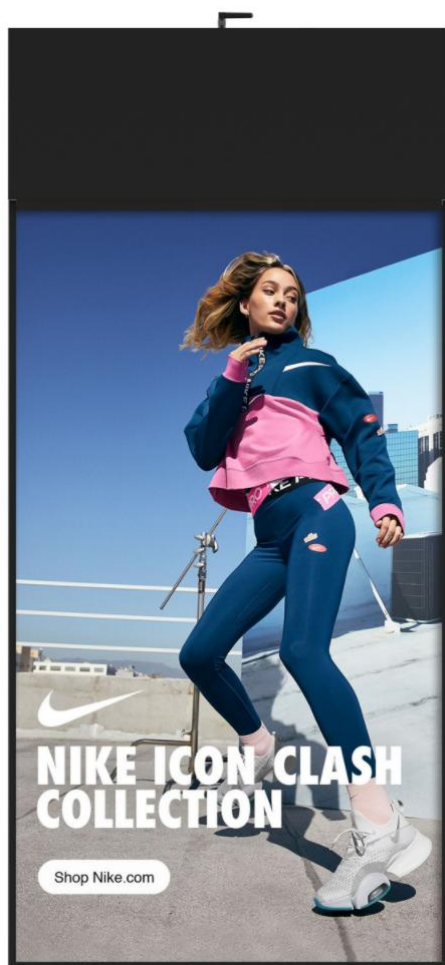


SPECIFICATION

Product number: G363DVN60-S01

Product type: Double-sided display



Checked by	Rechecked by	Approved by
Comments	Approved by	Company's seal
Customer's Name:		

Please send the original back to us after you have approved and signed.

Modify History

Ver.	Page	Revised Descriptions	Date	Revision	Approval
REV.1.0	ALL	T0	2025.04.16		

Product Parameter:

36.3"		Specifications	Units/Number	Notes
Model				
	Dimension	473.95 (L)*1012.58(H)*40(W)	MM	
	Shell material	Aluminum profile frame black	-	
	Gross Weight	10.5	Kg/gross weight	
Screen Parameters	Display Size	452.35 (L)*803.52(H)	MM	
	Display- resolution	1216*2160	Pixel	
	Brightness	300	Cd/m ²	
	Contrast ratio	1200:1	-	
	Display scale	9:16	-	
	Viewing angle	89/89/89/89	-	
	Pixel pitch	0.372*0.372	MM	
	Display color	16.7	M	
Electrical	Maximum power	≤90	W	
	Standby power	≤1	W	
	Supply Voltage	12	V	
	Horn	8Ω3W	-	
WorkStorage	Operating temperature	0-50	°C	
	Working- humidity	10-80%	%hr	
	Storage temperature	-20-50	°C	
	Storage Humidity	10-80%	%hr	
Power interface		DC 24V 5A		

36.3"		Specifications	Units/ Number	Notes
Model				
Functional configuration	CPU	RK3588, eight-core 64-bit large core architecture, 4*Cortex-A76 + 4*Cortex-A55		
	Operating System	Android13		
	Memory Storage	4GB+64GB		
	built-inROM	/		
	HDMI Out	/		
	HDMI import	1*HDMI IN		
	Support Video-Formats	Supports MPEG-1, MPEG-2, MPEG-4, H.263, H.264, H.265, VC-1, VP9, VP8, AV1 and other video formats		
	Support Image-Formats	Supports various image formats such as JPG, BMP and PNG		
	Audio Input/Output	/		
	Headphone Output	/		
	USB Interface	1*USB 3.0 HOST, 1*USB 3.0 OTG		
	Serial Port	4 *UART, 1 DEBUG, 1 *MCU burn serial port; RS232 and RS485 are optional		
	Network Support	Supports gigabit Ethernet, 2.4G/5G dual-mode Wi-Fi, 6th generation wireless technology (Wi-Fi 6), and Bluetooth 5.0		
	Memory Card	Supports TF card data storage, up to 512G		
	RTC	Built-in real-time clock function, support regular on/off		
	System Upgrade	Support OTA upgrade; support U disk upgrade		

Product Rendering:



Product Dimension Drawing:

