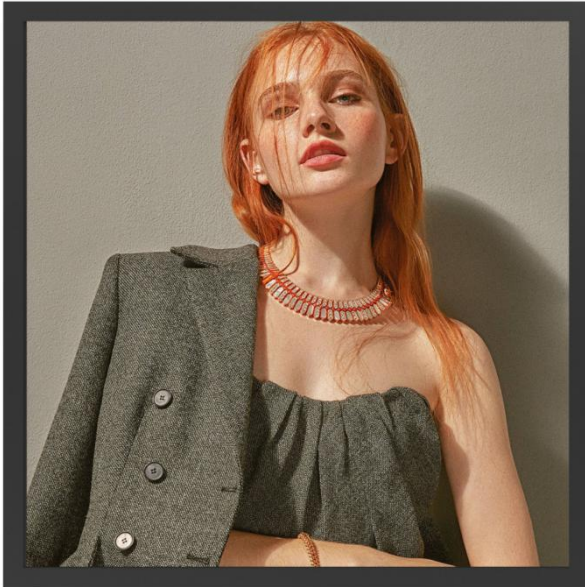


# SPECIFICATION

Product number: G59BYJ80-S01

Product type: Square screen display



Checked by	Rechecked by	Approved by
Comments	Approved by	Company's seal
Customer's Name:		

Please send the original back to us after you have approved and signed.

Modify History

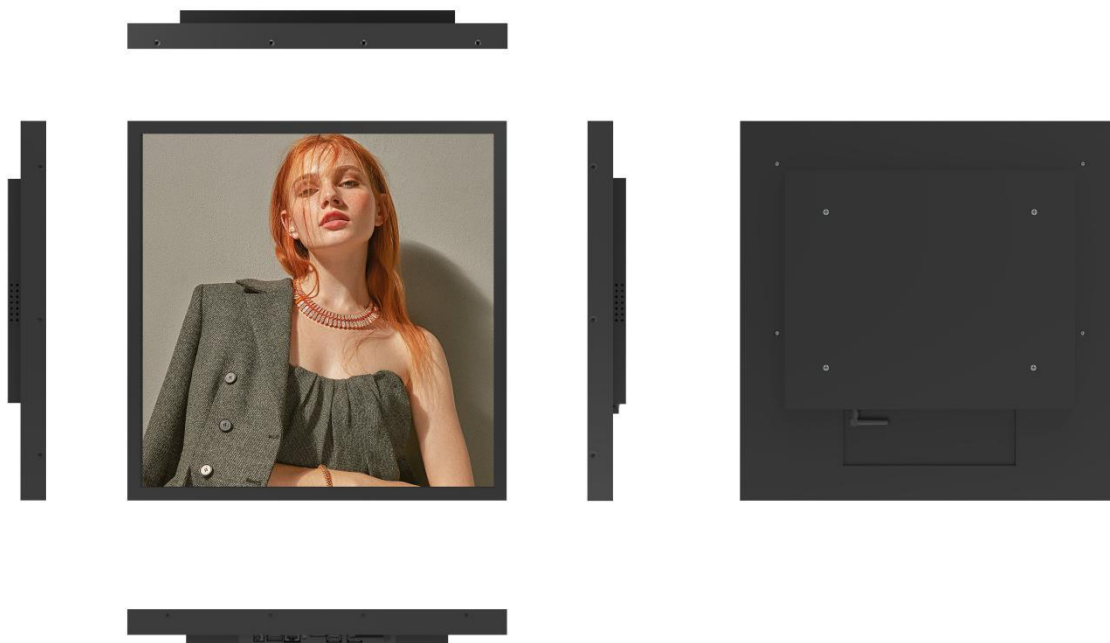
Ver.	Page	Revised Descriptions	Date	Revision	Approval
REV.1.0	ALL	T0	2025.04.16		

# Product Parameter:

59"		Model	Specifications	Units/Number	Notes
	Dimension		1090 (L)*1090(H)x46(W)	MM	
	Shell material		Black fine sand texture	-	
	Gross Weight		25	Kg/gross	
Screen Parameters	Display Size		1056.93(L)x 1056.93(H)	MM	
	Display- resolution		1880*1880	Pixel	
	Brightness		300	Cd/m <sup>2</sup>	
	Contrast ratio		1200:1	-	
	Display scale		1:1	-	
	Viewing angle		89/89/89/89	-	
	Pixel pitch		0.5622*0.5622	MM	
	Display color		1.07	B	
Electrical	Maximum power		≤200	W	
	Standby power		≤1	W	
	Supply Voltage		12V	V	
	Horn		3W/8 Ω*2	-	
WorkStorage	Operating temperature		0-50	°C	
	Working- humidity		10%~80%	%hr	
	Storage temperature		-20-50	°C	
	Storage Humidity		10%~80%	%hr	
Power interface			AC 110-240V		

59" Model		Specifications	Units/Number	Notes
Functional configuration	CPU	RK3288, quad-core, 1.8GHz, Android 5.1.1		
	Operating System	Android 5.1.1		
	Memory Storage	Standard 2G (4G optional) / Standard 8G (16/32/64G optional)		
	built-inROM	/		
	HDMI Out	1, supports 1080P@120Hz, 4kx2k@60Hz output		
	HDMI import	/		
	Support Video-Formats	Supports wmv, avi, flv, rm, rmvb, mpeg, ts		
	Support Image-Formats	Supports BMP, JPEG, PNG, GIF		
	Audio Input/Output	Supports left and right channel output, with built-in dual 4R/20W and 8R/10W power amplifiers		
	Headphone Output	Supports the insertion of one or two earphones		
	USB Interface	2 USB HOST		
	Serial Port	4 serial port sockets (2 TTL +2232), of which 1 is a Bluetooth multiplexed serial port		
	Network Support	Ethernet WIFI		
	Memory Card	Supports SD cards		
	RTC	Supports		
	System Upgrade	Supports local SD USB upgrades		

# Product Rendering:



# Product Dimension Drawing:

